



# Viz Remote Control Surface Utility

Version 1.02



**Copyright © 2023 Vizrt. All rights reserved**

No part of this software, documentation or publication may be reproduced, transcribed, stored in a retrieval system, translated into any language, computer language, or transmitted in any form or by any means, electronically, mechanically, magnetically, optically, chemically, photocopied, manually, or otherwise, without prior written permission from Vizrt. Vizrt specifically retains title to all Vizrt software. This software is supplied under a license agreement and may only be installed, used or copied in accordance to that agreement.

### **Disclaimer**

Vizrt provides this publication “as is” without warranty of any kind, either expressed or implied. This publication may contain technical inaccuracies or typographical errors. While every precaution has been taken in the preparation of this document to ensure that it contains accurate and up-to-date information, the publisher and author assume no responsibility for errors or omissions. Nor is any liability assumed for damages resulting from the use of the information contained in this document. Vizrt’s policy is one of continual development, so the content of this document is periodically subject to be modified without notice. These changes will be incorporated in new editions of the publication. Vizrt may make improvements and/or changes in the product(s) and/or the program(s) described in this publication at any time. Vizrt may have patents or pending patent applications covering subject matters in this document. The furnishing of this document does not give you any license to these patents.

### **Technical Support**

For technical support and the latest news of upgrades, documentation, and related products, visit the Vizrt web site at [www.vizrt.com](http://www.vizrt.com).

**Created on 2023/09/01**

---

# Contents



Introduction .....	1
Remote Switcher Tab .....	1
Control Surface Tab .....	2
Footer Tools .....	2
Notification Center.....	2

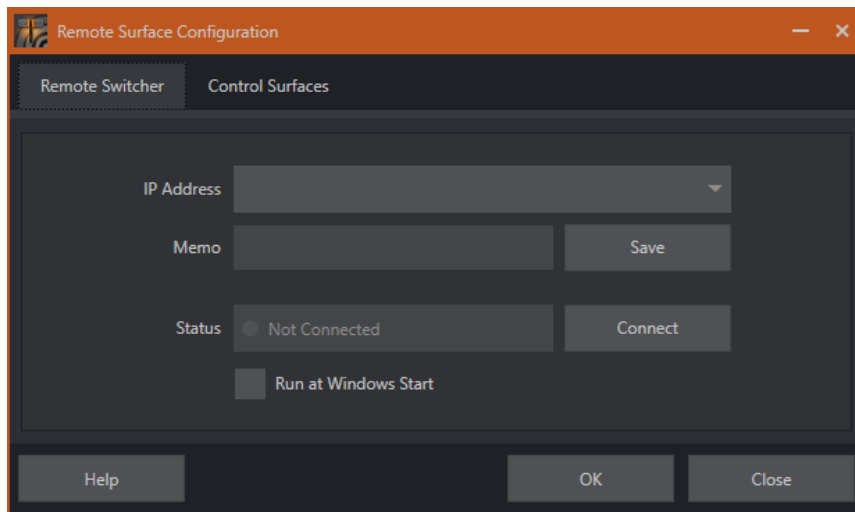
---

# Introduction

Vizrt provides this helpful utility to route Control Surface(s) to a remote Switcher. This document guides you through the use of the Remote Control Configuration Utility.

---

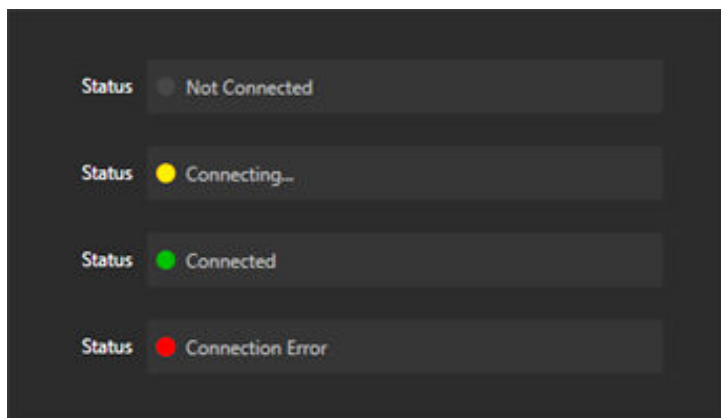
## Remote Switcher Tab



The *Remote Surface Configuration* panel has two tabbed panes. In the *Remote Switcher* pane, enter the IP Address of a TriCaster product you wish to connect a surface to. The IP Address box retains a history of recent values.

Optionally, add an entry to the Memo field and Save it to easily identify and recall a specific connection later.

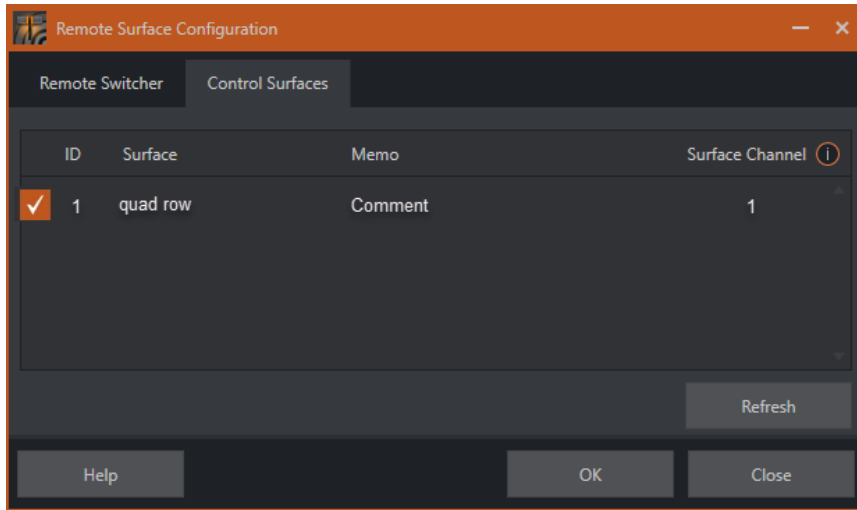
The *Status* field shows the connection state for the target system, as shown below.



And just beneath, you can choose to have the utility run and auto-connect at system startup by checking *Run at Windows Start* box.

---

## Control Surface Tab



The *Control Surface Tab* pane lists the Control Surfaces detected on your local network. Toggling the checkbox for a specific surface enables or disables remote control.

The ID column displays identifiers for available Control Surfaces. The *Surface Channel* column shows which channel the Control Surface is currently assigned to. Under *Memo*, you can enter a comment to help identify entries later.

The Refresh button updates the list of available Control Surfaces on the network.

---

## Footer Tools

Click the *Help* button in the utility's footer bar to download this PDF. Clicking *OK* saves changes and minimizes the application to the Notification Center located at the right end of the system taskbar. Clicking *Close* (or the titlebar [X]) stores the current state and exits the application.

---

## Notification Center



When the utility app is minimized, it is still resident in the Windows System Tray, and indicates the current connection status. Right-click the icon to open a context menu that allows you to *Exit* or display the full user interface by choosing *Show Interface*.