



# TriCaster® Mini Go: Quick Start Guide



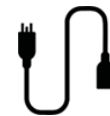
## What's in the box?



TriCaster® Mini Go



2 Mini DisplayPort to HDMI Adapter



Removable Power Cable



+ Keyboard & Mouse



2 Ethernet Cables x



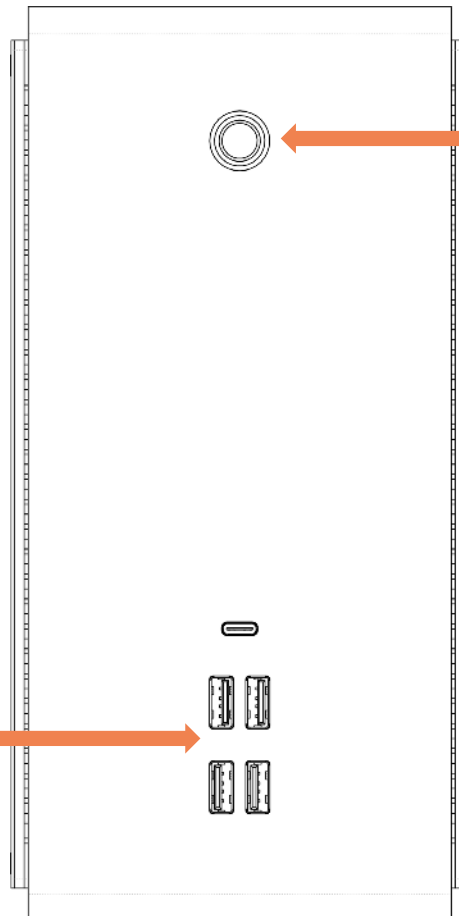
Power Supply



## TriCaster Mini Go Connections Set-Up – Front Panel

### Power Button

Push to power on  
TriCaster Mini Go



### USB Connectivity

- 1x USB 3.2 Type C, 2x USB 3.2 Type A, 2x USB 2.0
- Connect Microsoft DirectShow compliant video sources.
- Connect professional WDM compatible audio devices.
- Support for external storage



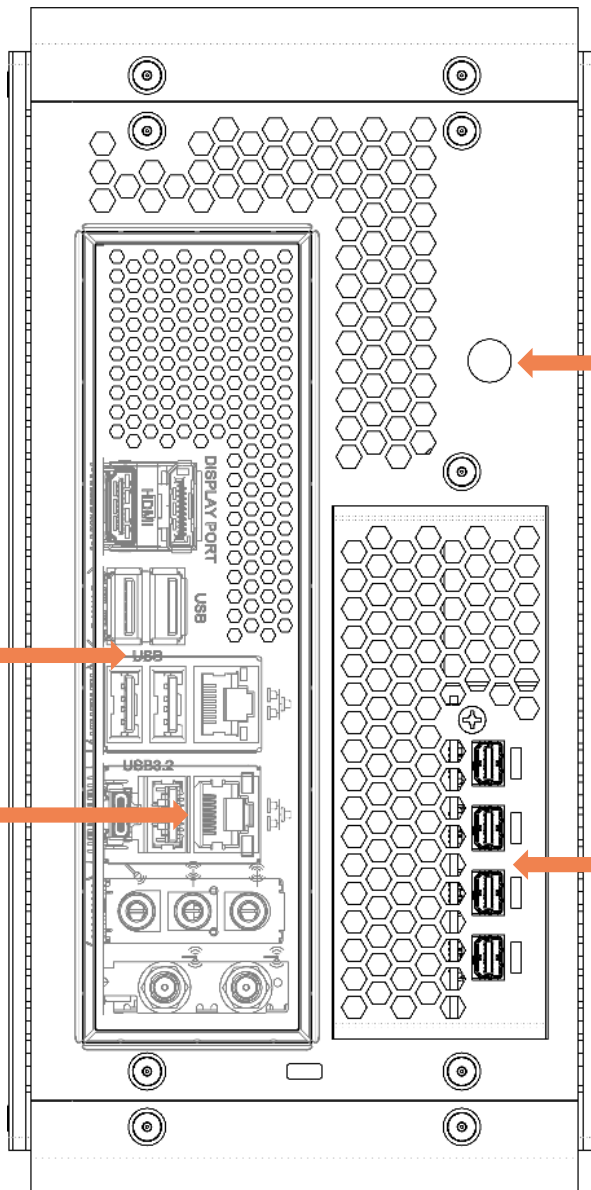
## TriCaster Mini Go Connections Set-Up – Back Panel

### USB Connectivity

- 1x USB 3.2 Type C, 2x USB 3.2 Type A, 2x USB 2.0
- Connect Keyboard & Mouse
- Connect Microsoft DirectShow compliant video sources.
- Connect professional WDM compatible audio devices.

### Dual 2.5 Gigabit Ethernet Network Interfaces

- Connect to network for IP input sources, for output and internet



### Power Connector

- Connect the removable power cord to the power supply.
- Connect the power supply cable to the power connector on TriCaster Mini Go.
- Plug in the removable power cable into electrical source.

### Mini Display Port Connectors

- Connect Mini Display Port to HDMI adapters
- Connect adapter cables to HDMI monitors and displays



## TriCaster Mini Go - Registration

### 1. Serial Number Label

Find the 15-character serial number label on the TC Mini unit.



### 2. Internet Connection

Use one of the 2.5 Gigabit Ethernet Network Connectors on the unit to make an active Internet connection.

### 3. Display, Keyboard & Mouse

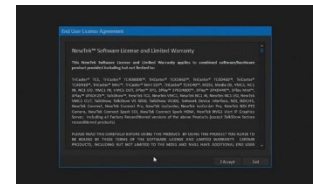
Be sure a display, keyboard and mouse are connected to the unit.

### 4. Power

Press the Power switch on the unit.

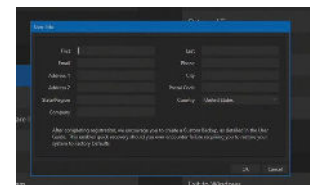
### 5. End User License Agreement

Once the unit finishes powering up the End User License Agreement screen appears. Click on I Accept the license conditions to continue



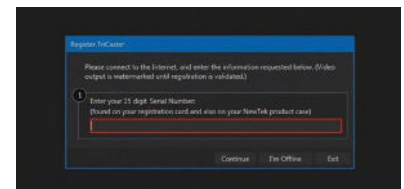
### 6. User Information

The user info screen now appears. Fill out the information and when complete, click OK.



### 7. TriCaster® Registration

The Register TriCaster® screen now appears. Type in the 15-character serial number and then click continue.



### 8. Software Update

After confirmation with the NewTek registration service, the system user interface appears. Before using the system, please go to <https://www.vizrt.com/support/product-updates/> to download and install the latest version of software.